

CONTROL TRANSFORMER PRIMARY CONNECTIONS

INPUT VOLTS	TERMINALS	JUMPER LOCATION
230/240	(H1)	(H1) TO (H3)
460/480	(H1)	(H2) TO (H4)
600	(H1)	(H2)

CONTACT SEQUENCE CHART FOR S2

CONTACT	POSITION	MANUF. LOCATION / TYPE
1	HAND	1R0
2	OFF	1L0
3	AUTO	2R0

* SCHEMATIC SHOWS THIS POSITION.

CONTACT SEQUENCE CHART FOR S2

CONTACT	POSITION	MANUF. LOCATION / TYPE
1	HAND	1R0
2	OFF	1L0
3	AUTO	2L0

* SCHEMATIC SHOWS THIS POSITION.

BLOWER MOTOR FOR A1000 CONFIG.

FLA RATING	AMPS	VOLTS
3.0	2.2 - 360	240
1.5	1.6 - 477	480
3.0	515 - 590	480
1.2	1.3 - 192	600

YASKAWA

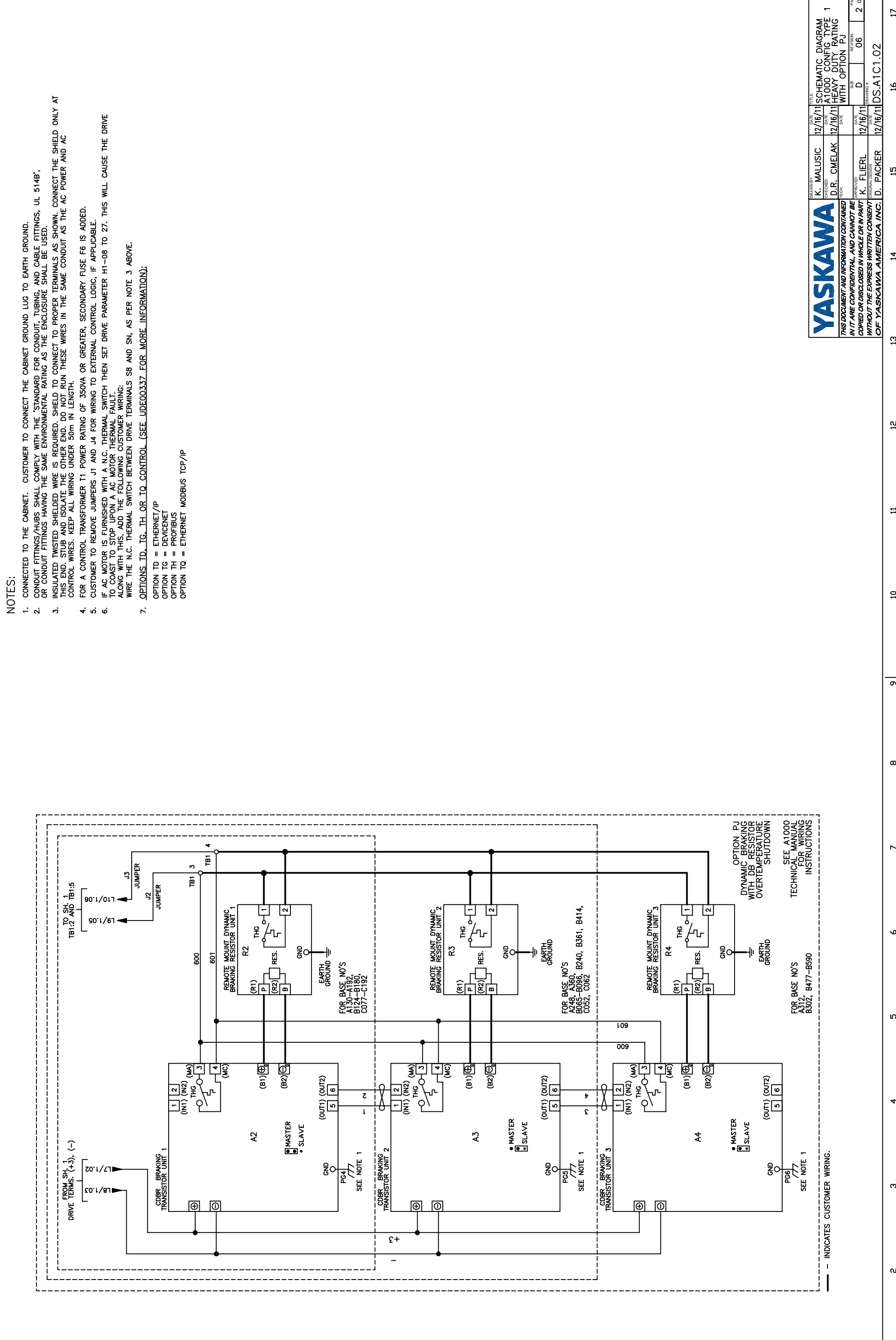
THIS DOCUMENT AND INFORMATION CONTAINED HEREIN IS CONFIDENTIAL AND CANNOT BE COPIED OR DISCLOSED IN WHOLE OR IN PART WITHOUT THE EXPRESS WRITTEN CONSENT OF YASKAWA AMERICA, INC.

REV.	DESCRIPTION	ECO #	DATE	DRAWN BY
06	UPDATE CUSTOMER WIRING TO BOLD LINES	6620	10/07/15	DJP
05	ADD MISSING REF NUMBERS 101-141 ON PAGE 1	6330	6/12/15	DJP

REVISIONS

REV.	DESCRIPTION	ECO #	DATE	DRAWN BY
06	UPDATE CUSTOMER WIRING TO BOLD LINES	6620	10/07/15	DJP
05	ADD MISSING REF NUMBERS 101-141 ON PAGE 1	6330	6/12/15	DJP

DATE: 12/16/11
 DRAWN BY: K. FLIERL
 CHECKED BY: D.R. CMELAK
 TITLE: SCHEMATIC DIAGRAM A1000 CONFIG TYPE 1 WITH OPTION PJ
 DATE: 12/16/11
 DRAWING #:
 REVISION: D 06
 PAGE: 1 of 2



- NOTES:**
1. CONNECTED TO THE CABINET. CUSTOMER TO CONNECT THE CABINET GROUND LUG TO EARTH GROUND.
 2. CONDUIT FITTINGS/HUBS SHALL COMPLY WITH THE 'STANDARD FOR CONDUIT, TUBING, AND CABLE FITTINGS, UL 514B', OR CONDUIT FITTINGS HAVING THE SAME ENVIRONMENTAL RATING AS THE ENCLOSURE SHALL BE USED.
 3. INSULATED TWISTED SHIELDED WIRE IS REQUIRED. SHIELD TO CONNECT TO PROPER TERMINALS AS SHOWN. CONNECT THE SHIELD ONLY AT THIS END. STUB AND ISOLATE THE OTHER END. DO NOT RUN THESE WIRES IN THE SAME CONDUIT AS THE AC POWER AND AC CONTROL WIRES. KEEP ALL WIRING UNDER 50m IN LENGTH.
 4. FOR A CONTROL TRANSFORMER T1, POWER RATING OF 350VA OR GREATER, SECONDARY FUSE F6 IS ADDED.
 5. CUSTOMER TO REMOVE JUMPERS J1 AND J4 FOR WIRING TO EXTERNAL CONTROL LOGIC, IF APPLICABLE.
 6. IF AC MOTOR IS FURNISHED WITH A N.C. THERMAL SWITCH THEN SET DRIVE PARAMETER H1-08 TO 27. THIS WILL CAUSE THE DRIVE TO COAST TO STOP UPON A AC MOTOR THERMAL FAULT. ALONG WITH THIS, ADD THE FOLLOWING CUSTOMER WIRING: WIRE THE N.C. THERMAL SWITCH BETWEEN DRIVE TERMINALS SB AND SN, AS PER NOTE 3 ABOVE.
 7. OPTIONS ID, IG, TH OR TQ CONTROL (SEE UDE00337 FOR MORE INFORMATION):
 OPTION TD = ETHERNET/IP
 OPTION TG = DEVICENET
 OPTION TH = PROFIBUS
 OPTION TQ = ETHERNET MODBUS TCP/IP

YASKAWA		DATE	12/16/11	TITLE	SCHEMATIC DIAGRAM
DRAWN BY	K. MALUSIC	DATE	12/16/11	DATE	12/16/11
CHECKED	D.R. CMELAK	DATE	12/16/11	DATE	12/16/11
TECH		DATE		DATE	
PROVISED	K. FLIERL	DATE	12/16/11	DATE	12/16/11
APPROVED	D. PACKER	DATE	12/16/11	DATE	12/16/11
REVISED		DATE		DATE	
SIZE	D	SIZE	06	SIZE	2 of 2
DRAWING #		DRAWING #		DRAWING #	
				DS-A1C1.02	

THIS DOCUMENT AND INFORMATION CONTAINED IN IT ARE CONFIDENTIAL AND CANNOT BE COPIED OR DISCLOSED IN WHOLE OR IN PART WITHOUT THE EXPRESS WRITTEN CONSENT OF YASKAWA AMERICA, INC.

FOR BASE NO'S A248, A360, B065-B096, B240, B361, B414, C052, C062

FOR BASE NO'S A302, B477-B590

OPTION PJ DYNAMIC BRAKING WITH DB RESISTOR OVERTEMPERATURE SHUTDOWN

SEE A1000 TECHNICAL MANUAL FOR WIRING INSTRUCTIONS

--- INDICATES CUSTOMER WIRING.